

# Cockpit Video, Audio & Flight Data Recorder



***Flightcell* SmartHUB**

# Rotorcraft & Light Fixed-Wing Cockpit Recording Solution

## VIDEO, AUDIO & FLIGHT DATA

The Flightcell SmartHUB is a cockpit recording solution that complies with FAA rule 135.607, International Association of Oil & Gas Producers (IOGP) 690-5 Helicopter Flight Data Monitoring and Cockpit Camera requirements.

## MULTI-PURPOSE

Utilize video, audio and flight data recordings to:

- Enhance flight performance
- Enhance pilot training
- Assist incident investigations
- Set exceedance events

## MULTIPLE CAMERAS

Easily mount and position the cockpit camera. An optional second camera is available for the aircraft cabin.

## OWN & ACCESS YOUR DATA

No subscription required to replay and analyze recordings via SmartHUB Flight Viewer.



Flightcell SmartHUB is the perfect tool to meet increasing global requirements for mandatory cockpit recording for government and public sector aircraft operators.

# SmartHUB



## Easy Data Download

No need to remove the SD card. Simply install a USB drive into the USB ports or use the ethernet connection on the front panel of the unit to your laptop. The ethernet option is the fastest method to retrieve data.

## Logging Capabilities

- ICS audio
- Ambient audio
- Cockpit video of the instrument panel
- Cockpit video of pilot control inputs
- GPS position, track, altitude, and speed data
- Barometric altitude
- Vertical rate (GPS and pressure)
- Turn rate, pitch, roll, yaw & G-Force



## Simple Installation

No internal battery or charging circuitry simplifies installation. Install under local modification (minor change). No STC is required.

## Cost-Effective Solution

SmartHUB is a cost-effective solution for aircraft where Flight Data Recorders are an operational requirement but not a regulatory requirement.

# Camera

## Multiple Cameras

Easily mount and position the cockpit camera. An optional second camera is available for the aircraft cabin.

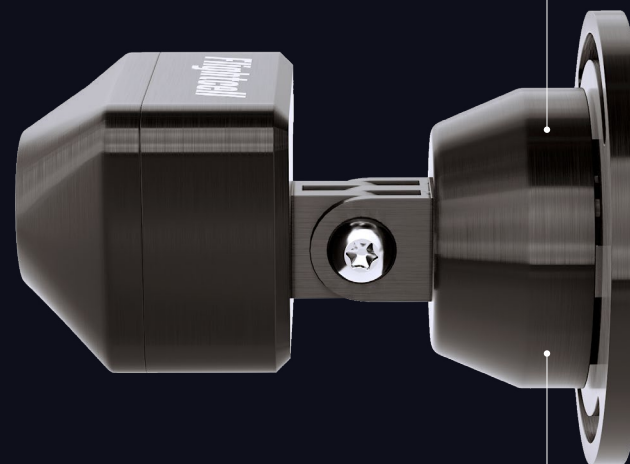


## High Quality Recording

HD1080p ultra low light camera  
Max resolution 1920x1080P, 2.0MP  
Max frame rate 30fps  
Embedded microphone for ambient cockpit audio

## Rugged & Compact Design

Machined from 6061 aluminum and powder coated



## Strong Mountable Swivel Bracket

Meet RTCA-DO160G standards

# Own & access your data

**SH**

View raw data directly post-flight or replay and analyze your video, audio & flight data with SmartHUB Flight Viewer. This 3D open playback software incorporates a topographical map overlaid with flight path imagery.



- No costs to access your data
- Easy data download
- Review video, audio & flight data
- View files separately or together
- You own and retain all data
- Set & access exceedance events

# Multi-purpose



## Enhance Flight Performance

Operators, MROs, and flight crews can utilize rich data to review an aircraft's operation for trend analysis and to contribute to the optimization of future flights.



## Assist Incident Investigations

When incidents or accidents occur, a cockpit recorder is of enormous support for assessing human factors and events leading up to an occurrence. Investigators can gain valuable insights into why an event occurred and make much more meaningful safety recommendations from their findings.



## Meet Compliance Regulations

Government and regulatory agencies are increasingly making it mandatory to have cockpit recording devices fitted. SmartHUB complies with FAA rule 135.607 for Helicopter Air Ambulance operators and International Association of Oil & Gas Producers (IOGP) recommendations set out in sections 9 (Helicopter Flight Data Monitoring) and section 16 (Cockpit Camera).



## Enhance Pilot Training

A valuable investment for flight schools to utilize actual student pilot performance data to better evaluate and educate aspiring pilots.

# Multiple Cameras



## Multiple Cameras

Choose to install either one or two cameras.

- Easily mount and position cockpit camera(s)
- Install second camera in aircraft cabin
- Each flight is stored in a different file
- Data storage can be set to preserve or overwrite data (256GB micro card provided)
- Popular with air ambulance & EMS operators





# Technical Specifications

## Flightcell SmartHUB

### ELECTRICAL

DC Power Source:	+12V - +32VDC (28 nominal)
	Max current: ~1.93A @ 28VDC
Display:	256 x 64 OLED White display

### DIMENSIONS

Part Description	DZUS Mounted	
Faceplate width	146.0mm	5.7"
Body width	122.0mm	4.8"
Faceplate height	57.2mm	2.3"
Body height	50.0mm	2.0"
Depth (from front face to rear face)	160.0mm	6.3"

### WEIGHT

750g	1.7lbs
------	--------

### INTERFACES

10/100/1000 Ethernet
USB2.0
USB-C
RS-232
Analog audio (1)
GPI (3)
GPO (1)
Wi-Fi
GPS
Display mode switch
Power switch

### CONNECTORS

Main connector:	HD44 D Type Male Plug
Mating connector:	M24308/2-13Z
Secondary connector:	HD44 D Type Female Socket
Mating connector:	M24308/4-19F

### ENVIRONMENTAL

Ambient operating temperature:	-20C to +55C	-4F to 131F
D0-160G Env. Cat. [(A1)(F1)(B1)] BXB[UG]HXXXXXXZAZ[AC][SS]MXXXXXXAX		

## Flightcell Camera

### ELECTRICAL

DC Power Source:	+12V - +32VDC (28 nominal)
	Max current: ~1.93A @ 28VDC
Display:	256 x 64 OLED White display

### WEIGHT

150g	0.3lbs
------	--------

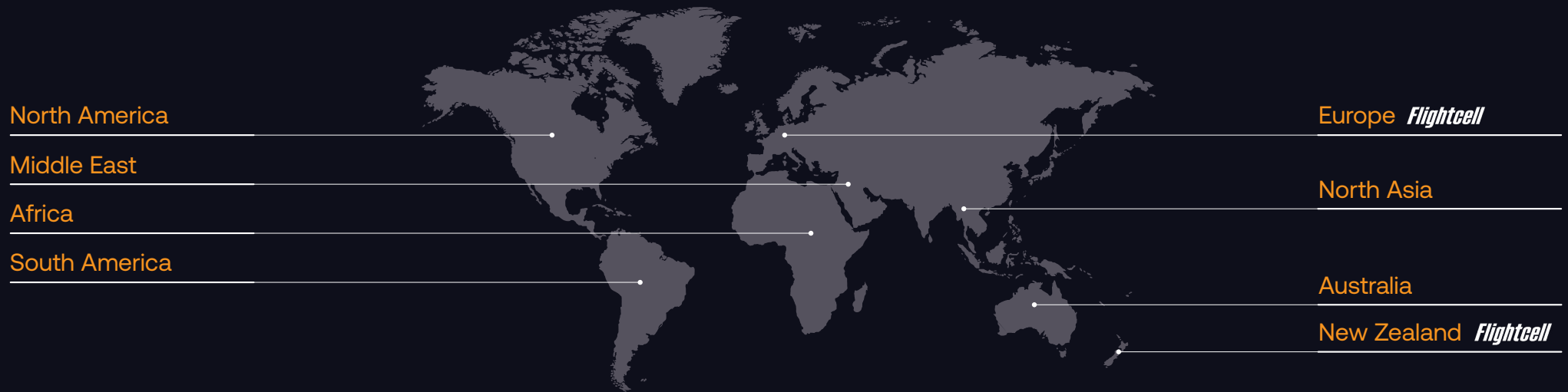
### DIMENSIONS

Width	50.0mm	2.0"
Height	38.0mm	1.5"
Depth	85.0mm	3.4"

*Note: Product specifications are correct as of August 2025. Refer to the Flightcell SmartHUB installation manual and Declaration of Design and Performance for full technical specifications.*  
<https://www.flightcell.com/support/documentation/dzmx-plus>



# About Flightcell



## About Flightcell

Setting quality standards since 2000, Flightcell is a global leader in aviation communication and recording systems, leveraging strong strategic relationships with aircraft manufacturers, industry partners and government.

Flightcell's trusted products are highly configurable for operational requirements, focusing on providing solutions to rotorcraft and fixed-wing aircraft that specialize in aerial firefighting, air medical, search and rescue, law enforcement, business aviation, oil and gas and military operations.

## Contact

Phone: +64 3 545 8651 (New Zealand)

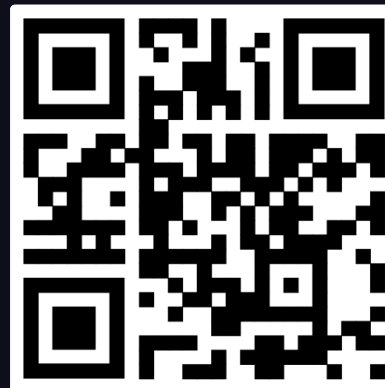
Email: [info@flightcell.com](mailto:info@flightcell.com)

Online: [flightcell.com](http://flightcell.com)

# *Flightcell*

Always Connected

View Flightcell SmartHUB



flightcell.com